

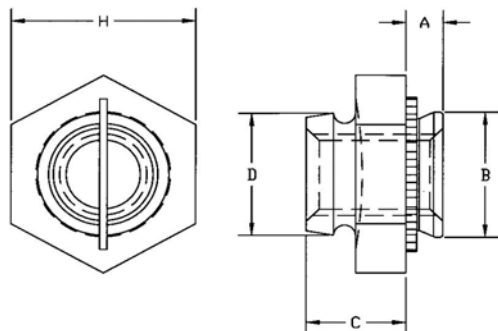


# Self Clinching Self Locking Nuts



## Series CRT, CRTS, CRTA

The CRT series fastener provides a low installed cost solution where a clinching fastener with repeat locking torque is required. The design allows for greater reusability and minimizes the possibility of thread damage of the mating screw.



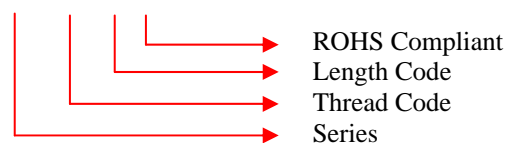
Series	Material	Finish
CRT	Carbon Steel	Black Dry film Lubricant over Zinc Phosphate
CRTS	Stainless Steel	Black Dry film Lubricant
CRTA*	Aluminum	None

Thread: Class 2B, MIL-S-7742; (6g ISO Metric)

Use in: Cold Rolled Steel

Part Number Structure:

CRTS 440-4ML



### Dimensions & Specifications

INCH (in.)	THREAD SIZE	TYPE			Shank Code	A Max	Min	+0.003 -0.000	B MAX.	D MAX	C +/-0.10	H Nom.	Min. Dist Hole C/L to edge
		Carbon Steel	Stainless Steel	Aluminum									
#440	CRT	CRTS	CRTA	1	.038	.040	.187	.186	.185	.135	.250	.156	
				2	.054	.056							
#6-32	CRT	CRTS	CRTA	1	.038	.040	.219	.218	.220	.145	.312	.187	
				2	.054	.056							
#8-32	CRT	CRTS	CRTA	1	.038	.040	.266	.265	.250	.175	.343	.203	
				2	.054	.056							
#10-32	CRT	CRTS	CRTA	1	.038	.040	.312	.311	.285	.205	.375	.218	
				2	.054	.056							

### Dimensions & Specifications

Metric (mm)	THREAD SIZE	TYPE			Shank Code	A Max	Min	+0.08 -0.00	B MAX.	D MAX	C +/-0.25	H Nom.	Min. Dist Hole C/L to edge
		Carbon Steel	Stainless Steel	Aluminum									
M3X0.5	CRT	CRTS	CRTA	1	0.97	1	4.75	4.73	4.85	3.43	6.35	4	
				2	1.38	1.4							
M4X0.7	CRT	CRTS	CRTA	1	0.97	1	6.76	6.73	6.2	4.45	8.73	5.2	
				2	1.38	1.4							
M5X0.8	CRT	CRTS	CRTA	1	0.97	1	7.92	7.9	7.75	5.21	9.53	5.6	
				2	1.38	1.4							

\*Lubricated Screw is required